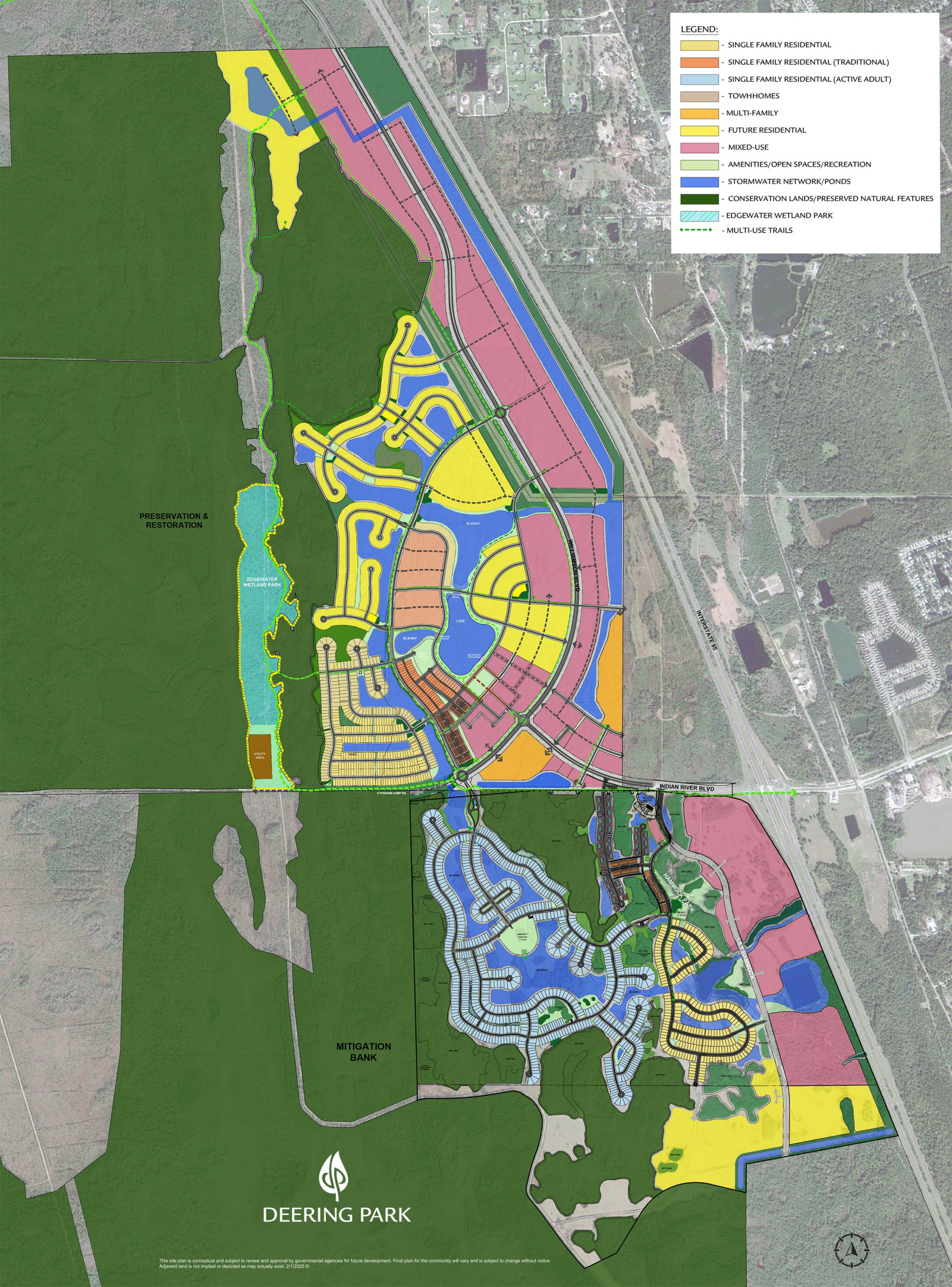


LEGEND:

- SINGLE FAMILY RESIDENTIAL
- SINGLE FAMILY RESIDENTIAL (TRADITIONAL)
- SINGLE FAMILY RESIDENTIAL (ACTIVE ADULT)
- TOWHHOMES
- MULTI-FAMILY
- FUTURE RESIDENTIAL
- MIXED-USE
- AMENITIES/OPEN SPACES/RECREATION
- STORMWATER NETWORK/PONDS
- CONSERVATION LANDS/PRESERVED NATURAL FEATURES
- EDGEWATER WETLAND PARK
- MULTI-USE TRAILS



PRESERVATION & RESTORATION

EDGEWATER WETLAND PARK

MITIGATION BANK

INDIAN RIVER BLVD

INTERSTATE 95



DEERING PARK

This site plan is conceptual and subject to review and approval by governmental agencies for future development. Final plan for the community will vary and is subject to change without notice. All parcel land is not implied or depicted as may actually exist. 2/1/2025 ©

